



WAMSLER

Solid Fuel Range Cookers

Central Heating Cookers

Multi-fuel Stoves







Welcome to Wamsler

Since its establishment by Friedrich Wamsler in Munich in 1875, the company has been a leading innovator in the field of kitchen and heating appliances. In the 1950s, for example, it developed the very first washing machine to incorporate an integral spin dryer and, in the 1970s, the company introduced a series of flat-packed gas fires.

Today, however, the Wamsler name is primarily synonymous with the manufacture of solid fuel cookers and heating products which are sold throughout Europe. Every appliance, including those hand-built to order, is produced under the internationally recognised ISO 9001 Quality Management System as well as being inspected to Germany's renowned DIN standards. Accordingly, your cooker, boiler or stove will enjoy not only a proven pedigree but also benefit from the latest production techniques.

As distributors for the UK and Republic of Ireland, Gazco has selected a wide choice of models that are particularly suited to British and Irish homes. So whether you are looking for a range cooker, central heating cooker, central heating boiler or heating stove there is almost certainly a Wamsler product to suit your needs.

Contents

Woodburning and Solid Fuels.....	4-5
900 Series Central Heating Cookers.....	6-9
1100 Series Central Heating Cookers.....	10-13
Solid Fuel Range Cookers.....	14-15
Central Heating Boilers.....	16
Multi-Fuel Stoves.....	17-23
Important Information.....	24-25
Technical Specifications.....	26-30





*Wood is a
renewable
resource that
is carbon neutral*



Woodburning & solid fuels

Every model featured in this brochure is capable of burning logs, coal or smokeless fuels using cleanburning 'secondary combustion' technology.

Wood is better in environmental terms as the amount of carbon dioxide released into the atmosphere is approximately the same as that absorbed by the tree during growth. It is also a renewable resource, particularly when derived from plantations and cultivated woodland. For optimum results, we recommend logs should be seasoned for 2 years or more to achieve a moisture content below 20%. This will not only give twice the heat output of freshly felled timber but help avoid a build up of tar in your flue. Furthermore, if you can obtain hardwood logs this is better still, as they will have around twice the calorific value of softwoods.

Anthracite, manufactured smokeless fuels and peat turfs/briquettes can all be burnt in Wamsler appliances as each firebox incorporates a grate with a riddling facility. Using the riddling device allows cinders and ash from such fuels to drop into the ashpan below and create the best conditions for efficient combustion.

In rural areas, Wamsler's Central Heating Cookers and Central Heating Boilers have a particular advantage as they allow homeowners to burn readily available log supplies from local sources, rather than look to increasingly expensive oil or LPG equivalents. Indeed, if you are a farmer, smallholder or country landowner your fuel could even be free!

In fact, if you live in the countryside, Wamsler makes greener cooking, central heating and domestic hot water a truly practical proposition.



*Making greener
cooking, central
heating & hot
water a reality*





CENTRAL HEATING COOKER



Ideal for more spacious, rural homes, the easy-to-use central control system means you can divert the heat flow to exactly where you want it.





900 Series

Central Heating Cooker

Compact yet powerful, the 900 Series offers homeowners the perfect solution for today's solid fuel heating and cooking. With its well-proportioned design, clean lines and choice of colours, a 900 Series Central Heating Cooker can easily blend into your kitchen, whether you opt for a fully-fitted look or your taste is for a less formal, freestanding style. Operation is simple too because there is a central control system which allows you to direct the heat to exactly where you want it; for cooking, baking and roasting or to the central heating and hot water supply.

The cooking capacity is considerable. You will find there is a large, heat-retaining hob which extends virtually across the complete top surface, allowing you to use numerous pans, and a generous 66 litre oven that can take a sizeable turkey or joint of meat.

The maximum heat output to hot water is 16kW. This means you should be able to run around ten radiators from your Wamsler 900 as well as providing an ample supply of domestic hot water for your home.

900 SERIES



Stainless Steel



White



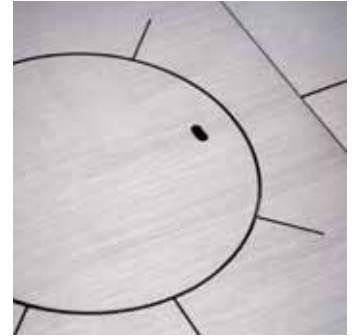
Standard features

- Impressive 8mm steel hob for cooking - 498 x 860mm (W x D)
- Spacious 66 litre oven with baking sheet and roasting tray
- Central control system with oven, hob and flue switching damper
- Roll-out drawer for pans or fuel
- Towel rail (optional on White and Burnt Sienna)
- Large firebox with spring lever handle to door
- Height adjustable, multi-fuel riddling grate
- Heat exchanger
- Maximum heat outputs: Wood - 18kW; Coal/Smokeless fuels - 16kW; To water - 16kW
- Top, rear or side flue - 150mm
- Choice of White, Black, Blue, Burnt Sienna or Stainless Steel



Options

- Two part, insulated hob lid (not Stainless Steel)
- 55mm or 110mm spacer units for fitted kitchens
- Baking tray



900 SERIES

The central control system allows the heat to be directed exactly where you want it, for cooking, baking and roasting or to the central heating and hot water supply.



Burnt Sienna



Blue



Black



*The large,
heat-retaining hob
extends across virtually
the complete top.*



900 SERIES



*1100 Central Heating
Cooker offers even
more cooking and
heating capacity*

1100 SERIES



1100 Series

Central Heating Cooker

Larger than the 900 Series, the 1100 Central Heating Cooker offers you even more cooking and heating capacity. In fact, with up to 18kW heat output to water it is ideal for more spacious rural homes - especially as the cooker's easy-to-use central control system means you can divert the heat flow to exactly where you need it; to the oven and hob for your cooking requirements or to the boiler unit for boosting the central heating and domestic hot water.



Black



Burnt Sienna



White

1100 SERIES

Standard features

- Extensive 8mm steel hob for cooking - 1045 x 492mm (W x D)
- Three part, insulated hob lid
- Capacious 66 litre oven with baking sheet and roasting tray
- Central control system with oven, hob and flue switching damper; thermometer and manometer
- Secondary air control for cleaner, more efficient combustion
- Roll-out drawer for pans or fuel
- Large firebox
- Height adjustable, multi-fuel riddling grate
- Heat exchanger
- Maximum heat outputs: Wood - 25kW; Coal/Smokeless fuels - 21kW; To water - 20kW
- Top, rear or side flue - 150mm
- Choice of White, Black or Burnt Sienna

Options

- Towel rail (standard on Black)
- 55mm or 110mm spacer units for fitted kitchens
- Baking tray





*1100 Central Heating
Cooker is ideal for
more spacious and
rural homes*

1100 SERIES

Solid fuel range cookers

If you require 'cooking only' then Wamsler offers two distinctive alternatives to grace the very heart of your kitchen. For normal cooking capacity, the compact 700 Creative and larger 900 Creative offer you extensive mix and match options - and, in particular, a choice of four different types of hob - meaning that each cooker is hand-built to your specification!

Alternatively, for greater cooker capacity you should select the impressive 1100, Wamsler's largest solid fuel cooker. Its beneficial features include a substantial hob area, generous 70 litre oven and an adjustable secondary air control to maximise efficiency when burning wood. In fact, you'll enjoy the perfect combination for countryside cooking.

Standard features - 700 & 900 Creative

- Large hob for cooking: 700 - 658 x 490mm (W x D); 900 - 848 x 490mm (W x D);
- Choice of hob styles: 8mm steel with square cover; 8mm steel with multi-ring cover; ceramic with steel section for flue and bain-marie (900 only)
- Spacious 44 litre oven with baking sheet & roasting tray
- Oven window with thermometer
- Roll-out drawer for pans or fuel
- Large firebox
- Height adjustable, multi-fuel riddling grate
- 7kW heat output
- Top, rear or side flue - 120mm
- Choice of colour-matched enamel or stainless steel edge to hob
- Choice of White, Black, Blue, Green, Pebble Grey or Stainless Steel

700/900 CREATIVE



700 Black



900 Black



700 Stainless Steel



900 Green



Options

- Hob lid (not Stainless Steel)
- 10 litre, stainless steel bain-marie (900 only)
- 55mm or 110mm spacer units for fitted kitchens
- Baking tray





*So many options,
each cooker is hand
built to order*

1100 SERIES



1100 White

Standard features - 1100

- Extensive hob for cooking - 835 x 510mm (W x D)
- Capacious 70 litre oven with baking sheet and roasting tray
- Oven window with thermometer
- Roll-out drawer for pans or fuel
- Large firebox
- Height adjustable, multi-fuel riddling grate
- Secondary air control for cleaner, more efficient combustion
- 10kW heat output
- Top, rear or side flue - 150mm
- Choice of White or Burnt Sienna

Options

- Towel rail
- 17 litre, stainless steel bain-marie
- 55mm or 110mm spacer units for fitted kitchens
- Baking tray

500 Series

Central Heating Boilers

With woodburning now much higher up the ecological agenda, due to wood being a renewable resource and 'carbon neutral', it is not surprising that these boilers are experiencing increasing interest throughout Europe and North America. They simply represent the greener alternative to oil and gas.

At just 505mm wide, Wamsler's solid fuel central heating boilers are a powerful and practical option too, producing up to 16kW output to water for radiators and domestic hot water. Furthermore, not only are they compact enough to locate in kitchens but also utility rooms, laundry rooms, boot rooms etc. And there's even a built in hob should power supplies fail or you need additional cooking capability at any time!

Standard features

- 8mm steel hob: 409 x 509mm (W x D)
- Insulated hob lid
- Towel rail (Black model only)
- Large firebox
- Height adjustable, multi-fuel riddling grate
- Secondary air control for cleaner, more efficient combustion
- Heat exchanger
- Maximum heat outputs:
157: Wood - 11.5kW; Coal/ Smokeless fuels - 10.5kW;
 To water - 11kW.
158: Wood - 21kW; Coal/Smokeless fuels - 17.5kW;
 To water - 18kW
- Top, rear or side flue - 150mm
- Choice of colours - **157:** White or Black.
158: White, Black or Burnt Sienna

Options

- 55mm or 110mm spacer units for fitted kitchens

500 SERIES



White



Black



Burnt Sienna



MULTI-FUEL STOVES

Wamsler Stoves

Developed to provide an outstanding focal point in today's modern living spaces, Wamsler's multi-fuel stoves combine the latest, high efficiency heating technology with contemporary design.

There are five models from which to choose. Each has its own special style and character, individually created to fulfill varying design criteria from fitting into fireplace openings to providing the visual presence that marks the centrepiece of your room.



METROPOLITAN



Red



Black



Silver



Metropolitan

Multi-fuel Stove

One of the most distinctive stoves in the Wamsler multi-fuel stoves range is the Metropolitan. With its distinctive cylindrical style, this model really stands out! Available in three vibrant colours of Red, Black or Silver, the Metropolitan will provide an eye-catching focal point in any living space.

The Metropolitan's impressive style is matched by its heat output of up to 7.4kW - offering a cosy warmth to rooms of larger proportions. The Metropolitan is a functional style statement available with either a top or rear exit flue making it suit most installations.

- 1155 x 644 x 668mm (H x W x D)
- Cleanburn technology
- 7.4kW maximum heat output
- Top or rear flue (150mm)
- Wood or solid fuel
- Red, Black or Silver finish



*Combining
contemporary style
and impressive
heat output.*

METROPOLITAN

M-Line Multi-fuel Stoves

The M-Line is available in two models; the Chicago with its subtle curved front and the Boston which offers a more clean, geometric flat design. Both models feature distinctive angular styling details accennuated by the striking grey and black finishes.

With a choice of either a 120mm or 150mm top or rear flue exit, an M-Line multi-fuel stove will provide a stunning contemporary centrepiece whichever model you opt for.

- Boston: 975 x 562 x 391mm (H x W x D)
- Chicago: 975 x 572 x 438mm (H x W x D)
- Cleanburn technology
- 6.3kW maximum heat output
- Top or rear flue (120/150mm)
- Wood or solid fuel
- Grey/Black finish



BOSTON



*Ideally suited for
smaller living spaces
as an attractive
designer focal point*

PYRAMID



*Streamlined and
oblique edges make
for a truly
unique stove*

Pyramid & Orpheus

Multi-fuel stoves

The streamlined, oblique edges and the slanted rectangular form of the Pyramid make this stove a truly unique model.

With a contemporary grey and black finish, the Pyramid stands an impressive 1.2 metres tall to make a bold style statement in your living space. By burning either wood or solid fuel, its heat output is equally noteworthy and can achieve up to 8.9kW.

For a more minimalist style, the Orpheus provides a sleek and elegant look.

The steel grey finish is enhanced by the grey soapstone warming shelf. The Orpheus offers up to 8kW heat output and a generous, portrait flame viewing area, allowing you to enjoy your fire to the full.

Pyramid

- 1234 x 648 x 473mm (H x W x D)
- Cleanburn technology
- 8.9kW max. heat output
- Contemporary Grey/Black finish
- Top or rear flue exit (150mm)

Orpheus

- 1208 x 550 x 400mm (H x W x D)
- Cleanburn technology
- 8.0kW max. heat output
- Contemporary Steel Grey finish
- Grey soapstone warming shelf
- Top or rear flue exit (150mm)



ORPHEUS

What you should know

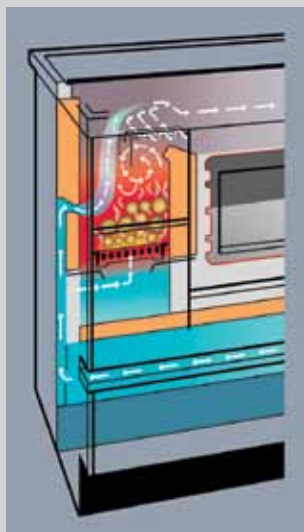
Naturally, before buying a solid fuel range cooker or central heating cooker there are a number of points to consider. The following information covers some of the most frequently asked questions.

1. Burning solid fuels

Wamsler solid fuel appliances can be heated with wood, anthracite, manufactured smokeless fuels and peat turfs/briquettes. The fireboxes have a large capacity and, according to model, can take logs from 370mm up to 420mm. There is a wide opening door to the firebox or, in many cases, you can also load from the top through a lift-up section in the hob.

Automatic temperature control

A temperature control allows the combustion air (or 'primary air') to be accurately adjusted and the heating system or oven to be regulated. According to model, thermometers are conveniently located in the viewing window or on the front fascia making temperature setting easy.



Secondary air control

When burning wood, you can improve your fuel efficiency by feeding in secondary air for a 'cleanburn'. This not only improves combustion but also greatly reduces any soot particles emitted into the atmosphere.



Control of the firebox

The height of the grate is adjustable. This means that in winter you can load enough fuel for up to 12 hours of continuous burning on a low setting. With a central heating cooker, when you raise the height, you reduce the heat output to the hot water system and save on fuel cost if you want mainly to cook. Ideal for the summer months!



Easy ash removal

The grate can be riddled whilst the ash compartment door is closed, regardless of its height setting. Baffle plates underneath the grate guide the cinders and ashes into the large capacity ashpan.

Air-cooled doors

The doors to the oven, firebox and ash collection compartment are cooled by convection to help reduce the surface temperature.

2. Central heating cookers and boilers

Combustion

As a general guide, at the maximum temperature setting, a single loading of coal/smokeless fuel lasts around 3 hours on a high setting and up to 12 hours on a low setting. A loading of logs will last approximately ½ hour to 1 ½ hours on high and 2-8 hours on low.

Hot water supply

We recommend you consult a qualified heating engineer before ordering to ensure the hot water supply and capacity are suitable for your needs.

3. Solid fuel range cookers

As a general guide, at the rated heat output a single loading of coal/smokeless fuel lasts a minimum of 2 hours whilst a loading of logs will last a minimum of ½ hour. The minimum burn time is the period during which it is not necessary to add fuel. Where further cooking time is required, the remaining embers are usually sufficient to ignite a further load.

Because solid fuel appliances must have sufficient air for combustion, a permanent air supply from outside will be required via a vent.

4. Installation

The fitting of all solid fuel heating appliances must be undertaken by a suitable qualified engineer (HETAS registered in the UK). This engineer must carry out a full site survey to verify that the location and chimney/flue conditions are appropriate for the appliance under consideration.

Appliances must not be placed in front of walls made of flammable material, or covered by such material. The floor underneath the cooker must be constructed of a suitable non-combustible material and this must also extend at least 500mm to the front and 300mm to the side. Additionally, no flammable or temperature-sensitive items should be positioned within 800mm of the front of the cooker.

The distance from the sides of the cooker to kitchen units, furniture or other wooden objects must be a minimum of 200mm although this can be reduced to 55mm with the use of a Wamsler spacer unit. A 110mm spacer provides even greater protection. Wall cupboards should be fitted a minimum of 700mm from the hotplate.

Full installation instructions can be obtained prior to purchase by downloading them from www.wamslercookers.co.uk

Cooker quality and features

All Wamsler solid fuel products are manufactured under the internationally recognised ISO 9001 Quality Management System and also inspected to Germany's renowned DIN standards. Accordingly, each appliance comes with a two year warranty as well as a host of features and options to ensure you enjoy the maximum benefits from your new cooker. The features will vary from model to model but here are some of the details at a glance:



- 8mm thick steel top plate for durability and heat retention
- Strengthened stainless steel welded edging without joins and, therefore, easy to clean
- Top loading facility



- Choice of flue exits including top, left and right hand sides
- Simple power adjustment



- Spacious, easy to clean oven with removable shelf
- Display window with thermometer



- Integral, roll-out drawer for pans or fuel



- Pore-free enamel surface aids cleaning



- Cooker height adjustable up to 50mm



- Spring lever handles.
- Separate firebox and loading doors



- Optional 55mm and 110mm spacer units where installed into fitted kitchens



Central heating cookers & boilers

Technical specifications

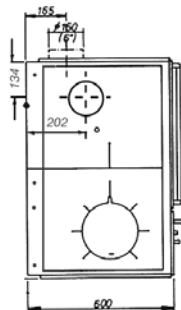
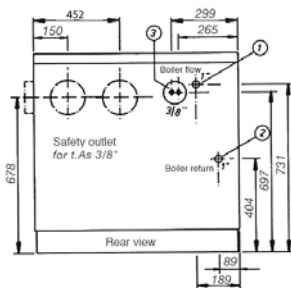
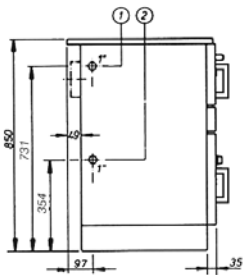
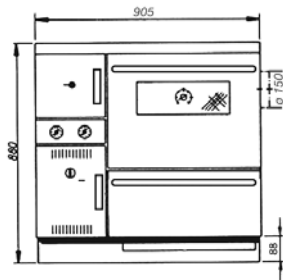
		Central Heating Cookers		Central Heating Boilers	
Model		900 Series	1100 Series	500 Series	
				157	158
Total heat output with wood	kW	20	27	13.5	23
Total heat output with coal/smokeless fuels	kW	18	23	12.5	19.5
Heat output to water (DHW system)	kW	16	20	11	18
Draught	mbar	0.15	0.20	0.15	0.18
Water content	ltr	18.5	23	7	16
Delivery and return connection	inches	1", back & side	1", back & side	1", back	1", back
Flue connection	Ømm	150	150	150	150
Gross/net weight	Kg	236/215	292/270	172/161	175/164
Dimensions					
Width	mm	905	1110	500	500
Depth	mm	600	600	600	600
Height without hob lid	mm	850	850	850	850
Height with hob lid closed	mm	880	880	875	875
Height with hob lid open	mm	1466	1466	1466	1466
Hob (WxD)	mm	845 x 437	1045 x 492	409 x 509	409 x 509
Firebox (WxD)	mm	234 x 421	280 x 421	234 x 421	234 x 421
Firebox height (grate to hob) min/max	mm	280 x 470	280 x 470	270/400	270/400
Firebox opening (WxH)	mm	180 x 200	180 x 200	180 x 200	180 x 200
Oven (WxHxD)	mm	460 x 360 x 420	460 x 360 x 420	-	-
Flue temperature at flue connector	°C	300	280	305	310
Required delivery pressure at rated heat output NWL	Pa	15	18	15	18
Required delivery pressure at 0.8x rated heat output NWL	Pa	12	14	12	15
Accessories and options					
Hob lid		+ (not Stainless)	•	•	•
Baking sheet and roasting tray		•	•	-	-
Baking tray		+	+	-	-
Poker/cover handle		•	•	•	•
Soot scraper		•	•	•	•
Spacer unit (55mm or 110mm)		+	+	+	+

• Supplied as standard + Available at additional cost - Not available/applicable

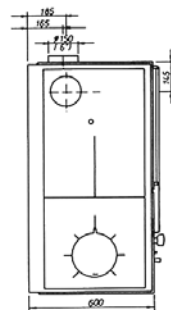
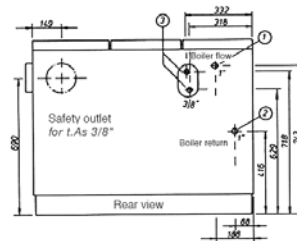
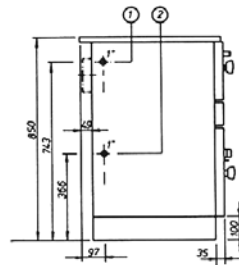
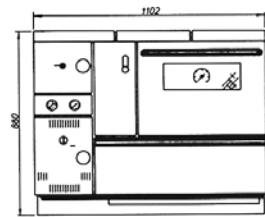
Central heating cookers & boilers

Dimensional drawings

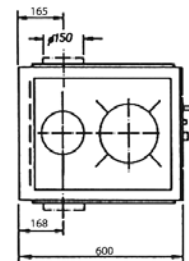
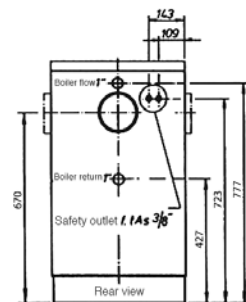
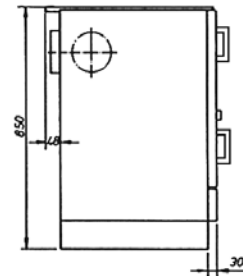
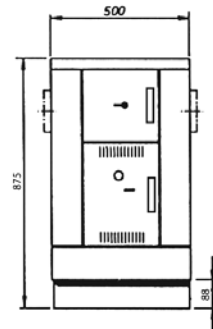
900 Series



I 100 Series



Boilers



Solid fuel range cookers

Technical specifications

		Range Cookers			Century Series		
Model		700 Series	900 Series	1100 Series	700	900	1100
Nominal heat output	kW	7	7	10	7	7	7
Flue connection	Ømm	120	120	150	120	120	120
Flue temperature at flue connector	°C	320	257	220	320	257	257
Gross/net weight	Kg	160/150	185/170	255/225	160/150	185/170	172/154
Dimensions							
Width incl towel rail	mm	715	905	1110	715	905	1070
Depth incl towel rail	mm	600	600	600	600	600	680
Height without hob lid	mm	850 + 50	850 + 50	850	850 + 50	850 + 50	850
Height with hob lid closed	mm	880 + 50	880 + 50	-	-	-	-
Height with hob lid open	mm	1455 + 50	1455 + 50	-	-	-	-
Hob (WxD)	mm	658 x 490	848 x 490	835 x 510	658 x 490	848 x 490	849 x 490
Firebox (WxD)	mm	180 x 370	180 x 370	200 x 410	180 x 370	180 x 370	180 x 370
Firebox height (grate to hob) min/max	mm	200/310	200/310	280/470	200/310	200/310	200/310
Firebox opening (WxH)	mm	160 x 195	160 x 195	180/200	160 x 195	160 x 195	160 x 195
Oven (WxHxD)	mm	360 x 270 x 450	360 x 270 x 450	460 x 360 x 420	360 x 270 x 450	360 x 270 x 450	360 x 270 x 450
Base height	mm	100/35	100/35	100/35	100/35	100/35	-
Base cover adjustment	mm	50	50	-	50	50	-
Floor to centre of rear/side flue exit (a1/a2)*	mm	694 + 50/ 674 + 50	678 + 50	690/690	694 + 50/ 674 + 50	678 + 50	677 rear only
Side to centre of rear flue exit (b)*	mm	104	104	149	104	104	141 from towel rail
Back to centre of side flue exit (c)*	mm	177	177	165	177	177	-
Side to centre of top flue exit (d)*	mm	134 not ceramic top version	128 not ceramic top version	130	134 not ceramic top version	128 not ceramic top version	164 from towel rail
Back to centre of top flue exit (e)*	mm	188 not ceramic top version	171 not ceramic top version	138	188 not ceramic top version	171 not ceramic top version	171

* See flue exit dimension diagrams opposite

Solid fuel range cookers

Accessories / Dimensional drawings

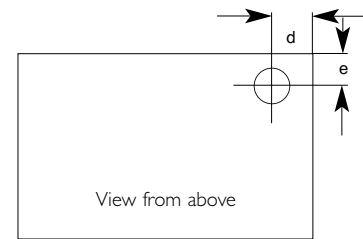
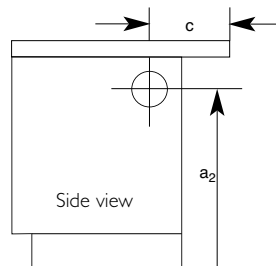
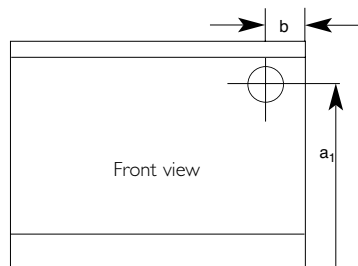
		Range Cookers			Century Series		
Model		700 Series	900 Series	1100 Series	700	900	1100
Accessories							
Hob lid		+	+	-	-	-	-
Towel rail		•	•	+	•	•	•
Baking sheet and roasting tray		•	•	•	•	•	•
Bain-marie (W x H x D/capacity)	mm/ltr	-	120 x 320 x 265/10	170 x 330 x 300/17	-	120 x 320 x 265/10	120 x 320 x 265/10
Spacer unit (W)	mm	55 or 110	55 or 110	55	55 or 110	55 or 110	-
Poker		•	•	•	•	•	•
Cover handle		•	•	•	•	•	•
Soot scraper		•	•	•	•	•	•

- Supplied as standard
- + Available at additional cost
- Not available/applicable

* Flue exit dimensions

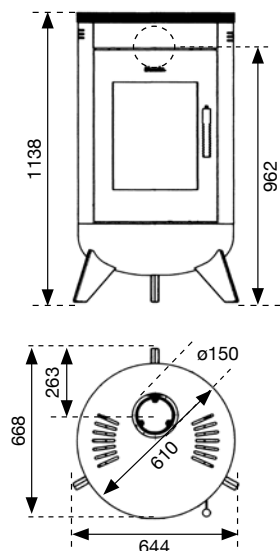
The diagrams of the range cookers below, allow right side connections.

For left side connections the diagrams need to be reversed.

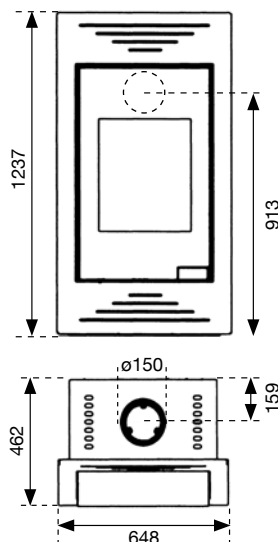


Stoves Dimensional drawings

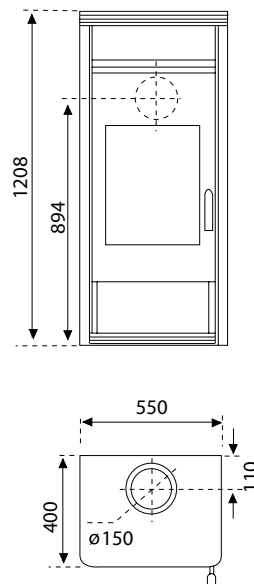
Metropolitan



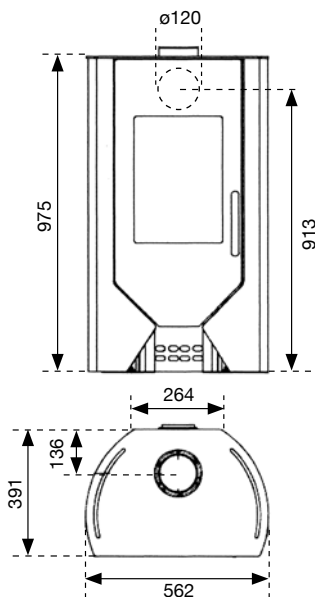
Pyramid



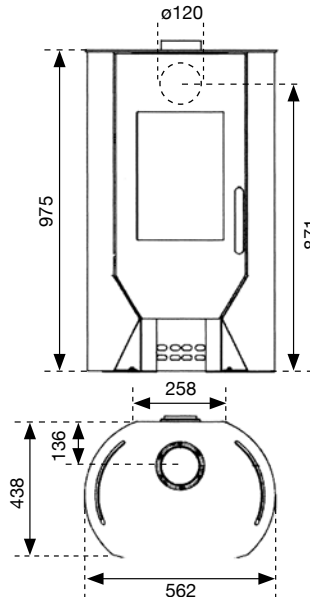
Orpheus



M-Line Boston



M-Line Chicago



Owing to variations in studio lighting and printing inks, the finishes/colours of fires illustrated in this brochure may differ slightly from actual models. Before purchasing, please ask your retailer to show you finish/colour samples.

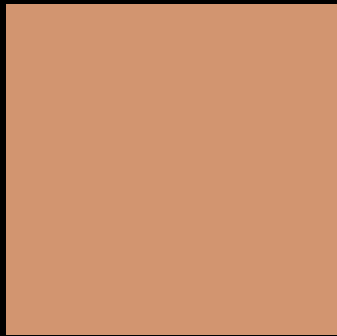
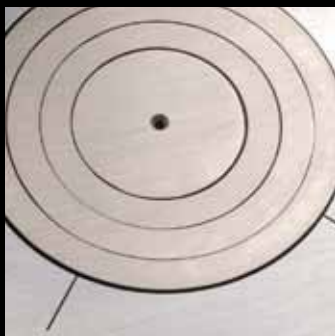
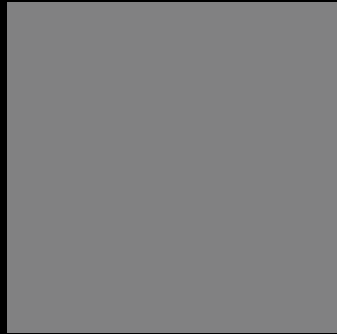
Please note that all parts of these cookers & stoves, particularly the glass panel in the door, become extremely hot during operation and can result in serious injury and burns if touched. It is therefore recommended that a fireguard complying with BS 8423:2002 is used in the presence of your children, the elderly or infirm.

Wamsler Cookers & Stoves gratefully acknowledge the assistance of the following companies with photographic settings:

Aqualisa www.aqualisa.co.uk • **Debenhams** www.debenhams.com Tel: 0844 5616161 • **Dingles** www.houseoffraser.co.uk Tel: 01392 259241

Eclectique www.eclectique.co.uk Tel: 01392 250799 • **Feature Radiators** www.featureradiators.com Tel: 01274 567789 • **Furniture Village** www.furniturevillage.co.uk

Orange Tree www.theorangetree.co.uk • **Original Style** www.orginalstyle.com • **The Cook Shop** www.justaddfood.co.uk



M-Line Chicago
Multi-fuel stove



Also available from the Stovax Group:



To view the
complete range of
brochures within
the Stovax group,
simply scan the
code below or visit
www.stovax.com



UK and Republic of Ireland distributors for Wamsler:

Gazco Limited, Osprey Road,
Sowton Industrial Estate, Exeter, Devon, England EX2 7JG

Trade Sales: 01392 261900

Fax: 01392 444804

e-mail: wamsler@gazco.com

web: www.wamslercookers.co.uk

Gazco Ltd is a member of the Stovax Group. The Group pursues a policy of constant product improvement and therefore cookers, boilers or stoves may differ in specification from those illustrated or described in this brochure.

Your local Gazco retailer:

£1.00

